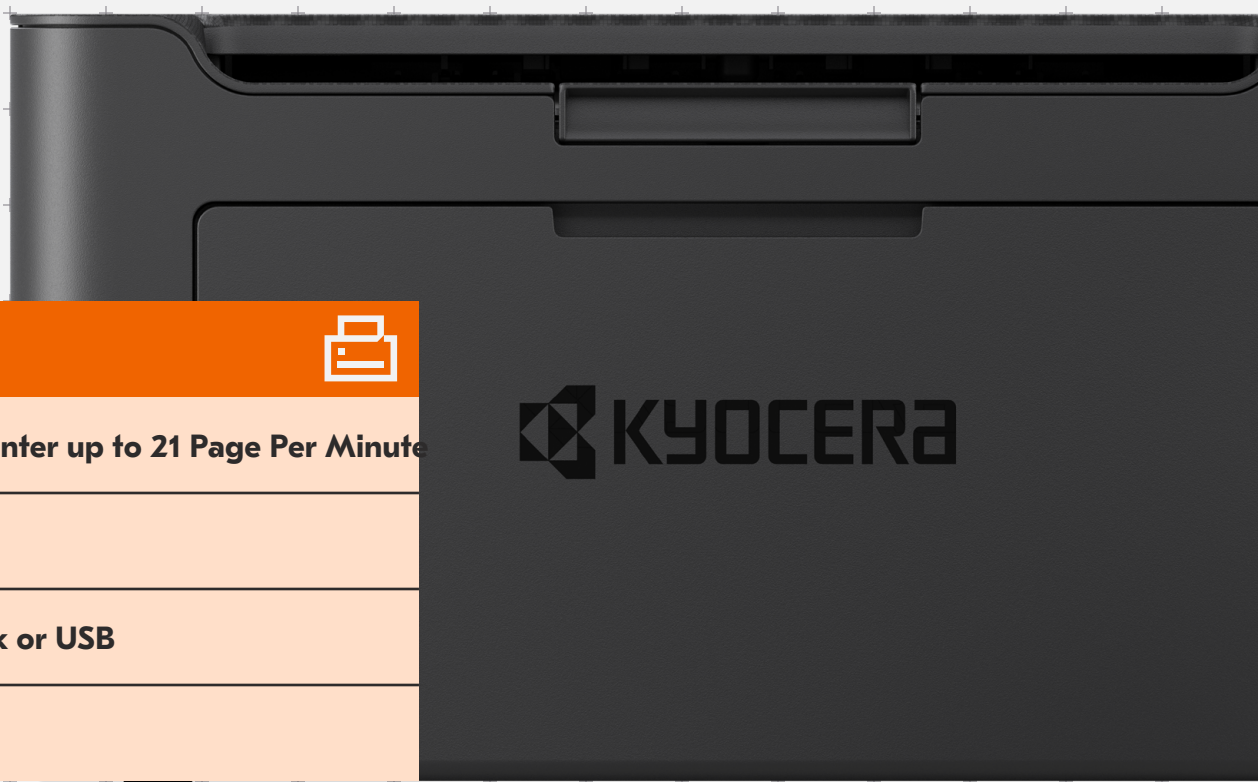



Simple and compact printer for offices and homes



PA2000w	
Monochrome Printer up to 21 Page Per Minute	
Print	
Wireless network or USB	
Lightweight	



Light and Compact

Due to its light and compact design, the device can be placed on the desk at a reachable distance to support your document tasks, whether you are in the office or working from home.



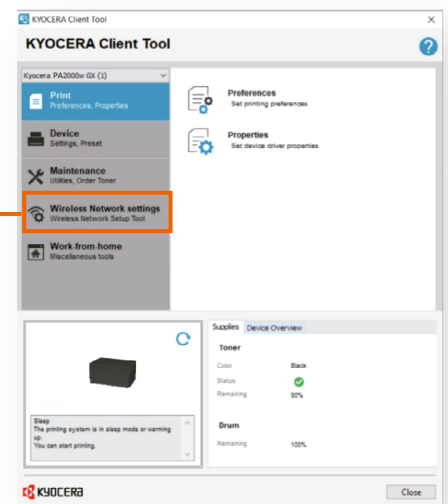
Easy to Use

The device features a simple and intuitive KYOCERA Client Tool, enabling users to easily print their documents.



Operation panel

+ Stop
+ Start



+ Wireless setup

KYOCERA Client Tool

*Image is for illustrative purposes only.
Descriptions may differ from the actual content due to page updates.

Easy Setup and Support

By accessing the online download center, users can view a step by step video that will walk them through the installation and also easily download necessary tools such as drivers and operator manuals. Furthermore, when there is a paper jam or the device runs out of paper during usage, the KYOCERA Client Tool displays popup messages to quickly guide you toward any assistance that may be needed. There is a QR code on the front of the printer for quick and easy access to How-To-Videos right from your smart device.



Web page - Global Download Center

*Image is for illustrative purposes only.
Descriptions may differ from the actual content due to page updates.

Additional Features Supporting Remote Work

The compact and lightweight design makes it easy to place and use from anywhere. The PA2000w toner/developer design utilizes all the toner without any waste. Also, with energy saving EcoPrint Mode and Quiet Mode technology, you're environmentally being green with reduced noise. For IT managers who require printing and scanning activity from remote workers, log data can be saved and exported periodically.

BASIC SPECIFICATIONS

Configuration: Single Function Printer
Speed: Letter: Letter: 21 ppm; Legal: 17 ppm; A4: 20 ppm
Duplex Print Speed: Manual
Display: 3 LED indicators
Warm Up Time: 20 Seconds or Less (Power On)
First Page Out Time:
 Print: 8 seconds or less
Resolution: 600 x 600 dpi, Fast 1200 Interpolated Resolution
Memory: Std/Max: 32MB
Duplex: Manual
Dimensions / Weight: 13.8" W x 9.2" D x 7.0" H / 9.9 lb.
Maximum Monthly Duty Cycle: 8,000 Pages per Month

POWER CONSUMPTION

Electrical Requirements: 120V, 60Hz, 5.6A;
 220-240V, 50/60Hz, 3.1A
Typical Electricity Consumption (TEC): 120V:
 0.22 kWh/week; 220-240V 0.22 kWh/week
Maximum Power Consumption: 120V: 658W; 220-240V: 700W
Printing: 120V: 333.7 W; 220-240V: 330 W
Ready Mode: 120V: 3.1W; 220-240V: 2.3W
Sleep Mode: 120V: 0.4W; 220-240V: 0.4W
Power Off: 120V: 0.1W; 220-240V: 0.2W

PRINTER SPECIFICATIONS

Standard Controller:
 ST Micro: STM32G071RBT6 20MHz (Engine Processing),
 SOC: ARM926EJ equivalent 450MHz (System Processing)
PDLs/Emulations: Hostbased (GDI)
Fonts: Bitmap: 1 Font
Drivers: GX Driver, KPSL Drivers (MAC & Linux),
 Status Monitor, TWAIN Driver, WIA Driver
Windows Printing Compatibility: GX driver
 supports; Windows 8.1 to Windows 11 both 32 and 64
 bit, Windows Server 2012/R2, 2016, 2019, 2022
MAC & Linux Printing Compatibility: KPSL drivers:
 Mac OS X 10.5 up to OS X 10.15
Interfaces: Wireless, 1 High-Speed USB 2.0 Printer Port
Mobile Printing: KYOCERA Mobile Print (IOS/Android)
Network Print and Supported Protocols: TCP/IP, IPv4,
 LPR, Port9100, WSD Print(Only USB), DHCP, DNS
Utilities: Web Installer, Maintenance
 Menu, Wireless Setup Tool
Additional Print Features: EcoPrint, Quiet Mode

SECURITY SPECIFICATION

Standard: WPA2-PSK (AES encryption)

PAPER HANDLING

Standard Paper Sources: Single 150 Sheet Drawer
Standard/Maximum Paper Sources: 1
 150 Sheets/150 Sheets
Paper Size: A5 to Legal (8.5" x 14")
Paper Weight: Bond 20 - 28lb (65 - 105gsm)
Standard Output Tray Capacity: 50 Sheets (Face Down)
Input Materials: Plain Paper, Recycled Paper

CONSUMABLES

TK-1242: Toner Black for up to 1,500 pages
DK-1242: Drum Black for up to 10,000 pages
Starter toner: Black toner yield 700 pages
 (Yield in accordance with ISO / IEC 19752)

Specifications and design are subject to change without notice. For the latest on connectivity visit kyoceradocumentsolutions.us, TASKalfa, Kyocera Net Viewer, Kyocera Device Manager, are trademarks of The Kyocera Companies. Mac OS is a trademark of Apple, Inc. Windows is a trademark of Microsoft, Inc. All other trademarks are the property of their respective owners.



Kyocera Document Solutions Partner

KYOCERA Document Solutions Canada, Ltd.
 6120 Kestrel Road, Mississauga, ON L5T 1S8, Canada
 Tel: 905-670-4425



kyoceradocumentsolutions.ca